



jordan fishwick

WEST DIDSBURY
The Beeches



The Beeches, West Didsbury, M20 2AH **£900 Per Calendar Month**



The Property

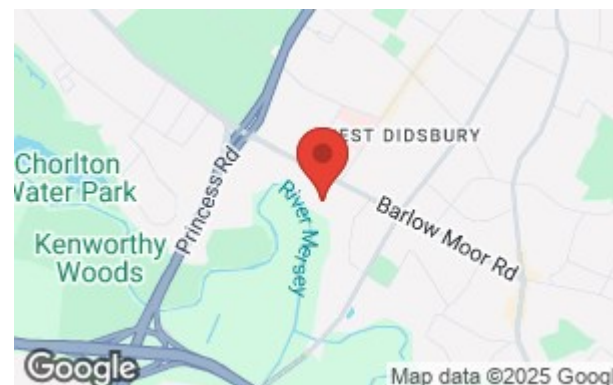
*** AVAILABLE NOW *** A spacious second floor apartment forming part of a purpose-built development in West Didsbury. Only a short walk up Burton Road to local bars & the Metrolink it makes the property ideal for a couple or single occupant. The accommodation briefly comprises; entrance hall, lounge/dining room, fitted kitchen, bathroom and a good-sized double bedroom. In addition to the communal gardens, there is resident's permit parking. Offered on a fully furnished basis. To arrange a viewing please contact our Didsbury office

View our Virtual Tour Here - <https://youtu.be/EWFszzYHyVw>

EPC Rating - E // Council Tax Band B

Directions

M20 2AH



- Available Now
- One Double Bedroom
- Second Floor Apartment
- Furnished
- Ideal for Singles or Couples
- Modern in Design
- Great Location of West Didsbury
- Residents Permit Parking
- Council Tax Band B
- EPC Rating E

Postcode - M20 2AH

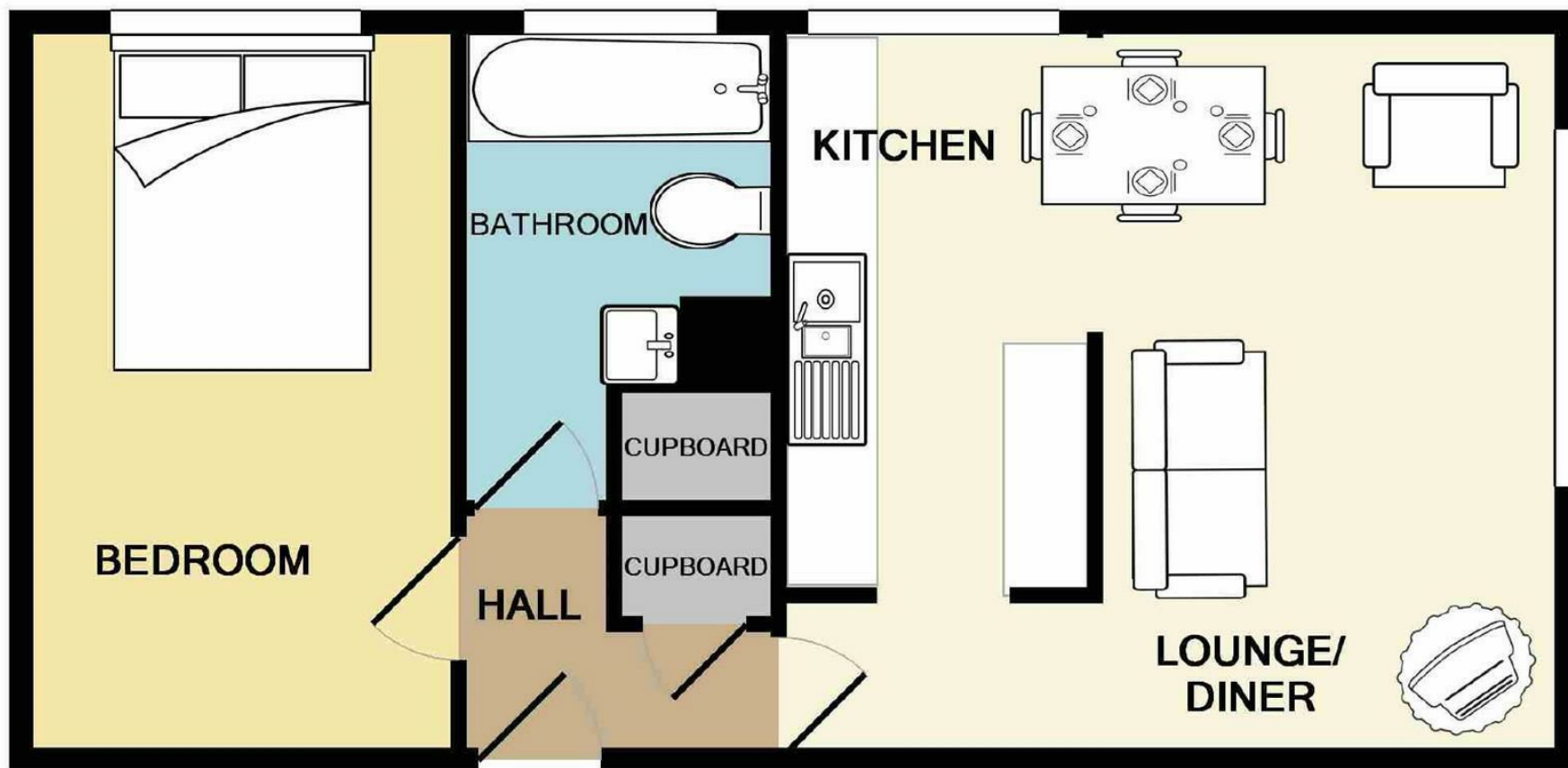
EPC Rating - E

Floor Area - sq ft

Local Authority - Manchester City Council

Council Tax - B





Measurements are approximate. Not to scale. Illustrative purposes only
Made with Metropix ©2018



These particulars are believed to be accurate but they are not guaranteed and do not form a contract. Neither Jordan Fishwick nor the vendor or lessor accept any responsibility in respect of these particulars, which are not intended to be statements or representations of fact and any intending purchaser or lessee must satisfy himself by inspection or otherwise as to the correctness of each of the statements contained in these particulars. Any floorplans on this brochure are for illustrative purposes only and are not necessarily to scale.

Offices also at: Wilmslow, Macclesfield, Hale, Sale, Chorlton, Glossop, Manchester & Salford

757-759 Wilmslow Road, Didsbury Village, Manchester

0161 445 4480

didsbury@jordanfishwick.co.uk
www.jordanfishwick.co.uk